

Simmons
BARS

TOP VENUES

EVENTS@SIMMONSBAR.CO.UK | 02073771843
WWW.SIMMONSBAR.CO.UK





ANGEL



OPENING TIMES

Monday 4pm-12am
Tuesday 4pm-12am
Wednesday 4pm-12am
Thursday..... 4pm-1am
Friday 4pm-3am
Saturday 4pm-3am
Sunday 4pm-12am

Simmons Angel is a charming cocktail bar perfect for hosting small to mid-sized gatherings. Its bric-a-brac-lined shelves infuse the space with character, while standout features like a Jaws head and a Tiki-themed DJ booth add a unique twist.

STANDING CAPACITY

90

SEATED CAPACITY

50

BRING YOUR OWN DJ

YES

★ **OUTSIDE SEATING** ★ **JAWS HEAD**

ANGEL

BANK



OPENING TIMES

Monday	4pm-2am
Tuesday	4pm-2am
Wednesday	4pm-2am
Thursday	4pm-2am
Friday	4pm-2am
Saturday	4pm-2am
Sunday	4pm-2am

Simmons Bank isn't your typical city hangout. It's easy on the wallet and heavy on the good vibes. It offers a prime location just a short walk from Bank station. As one of Simmons' largest venues, it boasts a stunning raised DJ booth and a spacious mezzanine.

FULL VENUE CAPACITY

300

MEZZANINE CAPACITY

100

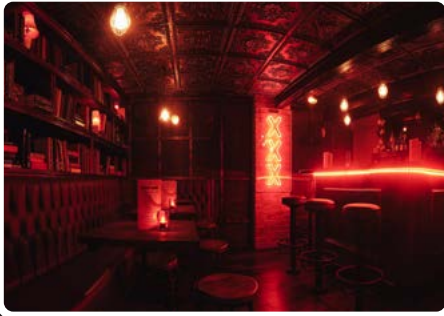
BRING YOUR OWN DJ

YES

★ **MEZZANINE AREA** ★ **2 BARS**



CAMDEN



OPENING TIMES

Monday 4pm-11:30pm
Tuesday 4pm-11:30pm
Wednesday 4pm-11:30pm
Thursday..... 4pm-11:30pm
Friday 4pm-12am
Saturday 3pm-12am
Sunday 3pm-10:30pm

Simmons Camden is perfect for a mid-sized function, blending cosy pub vibes with an unbeatable party atmosphere. Featuring a karaoke room and function space styled as an underground gentleman's club, it's a unique venue that'll keep your guests talking.

FULL VENUE CAPACITY

180

FUNCTION ROOM CAPACITY

30

BRING YOUR OWN DJ

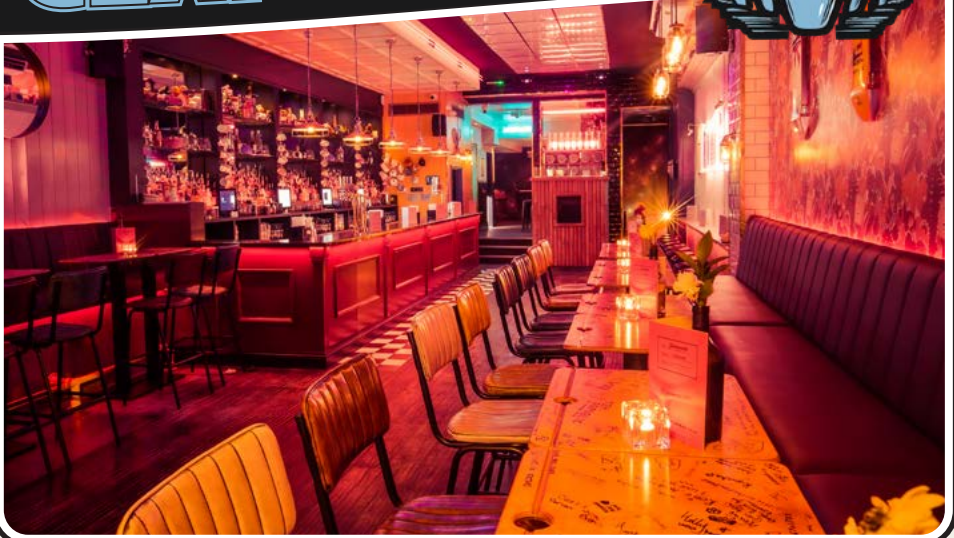
YES

★ **SPEAKEASY KARAOKE ROOM**

CAMDEN

7-9 Kentish Town Road, London, NW1 8NH

CLAPHAM



OPENING TIMES

Monday 4pm-2am
Tuesday 4pm-2am
Wednesday 4pm-2am
Thursday..... 4pm-3am
Friday 4pm-3am
Saturday 1pm-3am
Sunday 4pm-1am

Just off Clapham Common, offering outdoor seating, a spacious dance floor, vibrant neon lights, and a tucked-away back area. Whether it's a lively celebration or a more private gathering, this venue has all the essentials for a great party.

FULL VENUE CAPACITY

200

SEMI PRIVATE CAPACITY

40

BRING YOUR OWN DJ

YES

★ **OUTSIDE SEATING** ★ **ARCADE GAMES**



165 Clapham High St, London SW4 7SS

EUSTON SQUARE



OPENING TIMES

Monday4pm-11pm
Tuesday4pm-11pm
Wednesday4pm-11pm
Thursday..... 4pm-1am
Friday 4pm-1am
Saturday3pm-11pm
SundayCLOSED

Simmons Euston Square is perfectly placed in the centre of London. Known for its treasure trove of knickknacks that line the walls, the space features a fireplace centrepiece, an upstairs karaoke-come-function room, and school-desk-style seating (A+ from us!)

FULL VENUE CAPACITY

150

FUNCTION ROOM CAPACITY

60

BRING YOUR OWN DJ

YES

★ **KARAOKE** ★ **OUTSIDE SEATING**

WARREN ST

31 University Street, London, WC1E 6JL



FARRINGDON



OPENING TIMES

Monday4pm-11pm
Tuesday4pm-11pm
Wednesday 4pm-12am
Thursday..... 4pm-2am
Friday 4pm-2am
Saturday 4pm-2am
SundayCLOSED

Simmons Farringdon has it all! Upstairs, find a traditional Simmons vibe with charity shop treasures, nostalgic décor, and a giant Tic-Tac-Toe. Downstairs, is an industrial club room with dynamic lighting and a feature DJ booth to take your party from day to night.

FULL VENUE CAPACITY

200

FUNCTION ROOM CAPACITY

100

BRING YOUR OWN DJ

YES

★ **KARAOKE** ★ **BASEMENT CLUB ROOM**

FARRINGDON

105 Charterhouse Street, London, EC1M 6HW



FULHAM



OPENING TIMES

Monday	4pm-12am
Tuesday	4pm-12am
Wednesday	4pm-12am
Thursday.....	4pm-12am
Friday	4pm-1am
Saturday	4pm-1am
Sunday	4pm-12am

Simmons Fulham is a huge space, ideal for hosting large gatherings. The kitsch interiors bring an off-kilter vibe to the South, with curated furniture, dated trinkets, and flecks of neon. The venue nods to nostalgia but remains the perfect place to party in the 21st century.

FULL VENUE CAPACITY

320

SEMI PRIVATE CAPACITY

50

BRING YOUR OWN DJ

YES

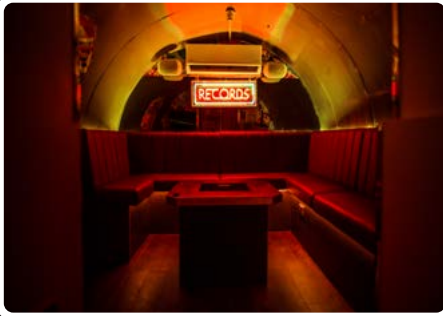
★ **BEER PONG** ★ **NINTENDO 64 & PS1**

FULHAM

374 North End Road, London SW6 1LY



GREEK ST



OPENING TIMES

Monday 3pm-11:30pm
Tuesday 3pm-11:30pm
Wednesday 3pm-11:30pm
Thursday..... 3pm-11:30pm
Friday 3pm-12am
Saturday 3pm-12am
Sunday 3pm-10:30pm

Simmons Greek Street, set in a former pub, is a compact yet perfectly located spot full of surprises. Discover a hidden karaoke room disguised as a Japanese supermarket and even a stained-glass window of Arnold Schwarzenegger.

FULL VENUE CAPACITY

100

KARAOKE ROOM CAPACITY

15

BRING YOUR OWN DJ

YES

★ **KARAOKE** ★ **OUTDOOR SEATING**



7 Greek St, London, W1D 4DF

HOLBORN



OPENING TIMES

Monday 4pm-3am
Tuesday 4pm-3am
Wednesday 4pm-3am
Thursday..... 4pm-3am
Friday 4pm-3am
Saturday 4pm-3am
SundayCLOSED

Simmons Holborn is our largest venue, offering two spacious bars and a vibrant basement club. With its glowing neons, a giant disco ball DJ booth, and room for up to 450 guests, it's the physical embodiment of cocktails, dreams and disco!

FULL VENUE CAPACITY

450

FUNCTION ROOM CAPACITY

200

BRING YOUR OWN DJ

YES

★ **DISCO BALL DJ BOOTH** ★ **2 FLOORS**

HOLBORN

109 Kingsway, London, WC2B 6PP



KING'S CROSS



OPENING TIMES

Monday 4pm-12am
Tuesday 4pm-12am
Wednesday 4pm-12am
Thursday..... 4pm-2am
Friday 4pm-3am
Saturday 4pm-3am
Sunday 4pm-12am

Simmons Kings Cross, the original Simmons Bar, is a one-of-a-kind venue in North London. Set across two floors, it features eclectic decor sourced from charity shops, including Scrabble tiles and cocktails served in teacups, offering a quirky setting for any gathering.

FULL VENUE CAPACITY

90

FUNCTION ROOM CAPACITY

50

BRING YOUR OWN DJ

YES

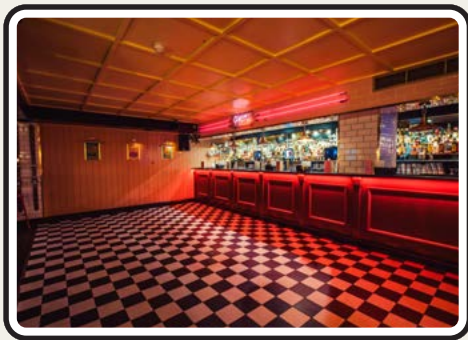
★ **THE OG** ★ **RETRO ODDITIES**

KINGS CROSS

32 Caledonian Road, London, N1 9DT



LEICESTER SQ



OPENING TIMES

Monday 3pm-3am
 Tuesday 3pm-3am
 Wednesday 3pm-3am
 Thursday..... 3pm-3am
 Friday 3pm-3am
 Saturday 3pm-3am
 Sunday3pm-12:30am

Simmons Euston Square is perfectly placed in the centre of London. Known for its treasure trove of knick knacks that line the walls, the space features a fireplace centrepiece and an upstairs karaoke-come-function room, with projector included (A+ from us!)

FULL VENUE CAPACITY

300

SEMI PRIVATE CAPACITY

90

BRING YOUR OWN DJ

YES

★ **DISCO CEILING** ★ **2 BASEMENT BARS**

LEICESTER SQ

28a Leicester Square, London WC2H 7LE



LIVERPOOL ST



OPENING TIMES

Monday4pm-11pm
Tuesday4pm-11pm
Wednesday4pm-11pm
Thursday.....4pm-11pm
Friday4pm-11pm
Saturday 12pm-11pm
Sunday4pm-11pm

Simmons Liverpool Street is quaint by day and comes alive by night. Spread over two distinct floors, the upstairs bar blends traditional pub charm, while the downstairs, inspired by a secret liquor store, is perfect for intimate gatherings.

FULL VENUE CAPACITY

120

SEMI PRIVATE CAPACITY

60

BRING YOUR OWN DJ

YES

★ **2 BARS** ★ **OUTSIDE SPACE**



21 Widegate Street, London, E1 7HP

MONUMENT



OPENING TIMES

Monday 4pm-2am
Tuesday 4pm-2am
Wednesday 4pm-2am
Thursday..... 4pm-3am
Friday 4pm-3am
Saturday 4pm-3am
Sunday 4pm-2am

Simmons Monument is a world-class space right in the heart of the city. Spread across 2 floors, the upstairs charms with its retro arcade games and cozy, laid-back vibe, while the club room downstairs transforms into a neon-soaked party paradise.

FULL VENUE CAPACITY

325

FUNCTION ROOM CAPACITY

150

SEMI-PRIVATE CAPACITY

50

★ **TV SCREEN AVAILABLE** ★ **3 BARS**

MONUMENT

35 Eastcheap, London, EC3M 1DE

MORNINGTON CRESCENT



OPENING TIMES

Monday 4pm-12am
 Tuesday 4pm-12am
 Wednesday 4pm-12am
 Thursday..... 4pm-1am
 Friday 4pm-2am
 Saturday 4pm-2am
 Sunday 4pm-10pm

Simmons Mornington Crescent may be small, but it's full of character. With bric-a-brac-covered walls, a retro SEGA Megadrive, and a tiki-style DJ booth by the dancefloor, it's a quirky space—complete with a surfboard on the wall.

FULL VENUE CAPACITY

90

SEMI PRIVATE CAPACITY

45

BRING YOUR OWN DJ

YES

★ **SEGA MEGADRIVE** ★ **TIKI ROOM**



7 Camden High Street, London, NW1 7JE

OLD STREET



OPENING TIMES

Monday 4pm-12am
Tuesday 4pm-12am
Wednesday 4pm-12am
Thursday..... 4pm-1am
Friday 4pm-2am
Saturday 12pm-2am
Sunday 4pm-12am

Simmons Old Street, famously known as the **GIANT PINK ONE**, is impossible to miss—and you wouldn't want to! Its bold exterior is a true showstopper. Inside, the expansive dancefloor and small outdoor area make it perfect for medium-sized gatherings.

STANDING CAPACITY

180

SEATED CAPACITY

72

BRING YOUR OWN DJ

YES

★ **OUTSIDE SEATING** ★ **THE PINK ONE**

OLD STREET

235 Old St, Old Street, London, EC1V 9HE

OXFORD STREET



OPENING TIMES

Monday 3pm-3am
 Tuesday 3pm-3am
 Wednesday 3pm-3am
 Thursday..... 3pm-3am
 Friday 3pm-4am
 Saturday 12pm-4am
 Sunday 12pm-12am

Simmons Oxford Street is a standout venue known for its prime location, giant dancefloor, and waltzer-style seating. Perfect for large parties, it features an elevated DJ booth and a mirror-ball ceiling, offering an unbeatable WOW factor.

FULL VENUE CAPACITY

350

SEMI PRIVATE CAPACITY

50-150

BRING YOUR OWN DJ

YES

★ **VIP WALTZERS** ★ **FIRE PERFORMERS**

OXFORD ST.

203 Wardour St, Soho, London W1F 8ZH

PICCADILLY CIRCUS



OPENING TIMES

Monday	3pm-12am
Tuesday	3pm-12am
Wednesday	3pm-12am
Thursday	3pm-12am
Friday	3pm-12am
Saturday	12pm-12am
Sunday	3pm-11:30pm

Simmons Piccadilly, located on London's iconic Golden Square, boasts a small outdoor courtyard and stylish bifold doors, making it ideal for indoor/outdoor functions. True to Simmons style, the venue is adorned with kitsch wallpaper and vibrant interiors.

FULL VENUE CAPACITY

220

SEMI PRIVATE CAPACITY

50

BRING YOUR OWN DJ

YES

★ **OUTSIDE TERRACE** ★ **PRIME LOCATION**



4 Golden Square, Soho, London, W1F 9HT



PUTNEY



OPENING TIMES

Monday4pm-11pm
Tuesday4pm-11pm
Wednesday4pm-11pm
Thursday.....4pm-12am
Friday4pm-2am
Saturday4pm-2am
Sunday4pm-11pm

Simmons Putney is situated in the heart of South West London, just a stone's throw from the Riverside. This impressive multi-story venue features electric neon signage, a fantastic outdoor terrace, and Putney's biggest dance floor.

FULL VENUE CAPACITY

250

FUNCTION ROOM CAPACITY

60

BRING YOUR OWN DJ

YES

★ **OUTSIDE TERRACE** ★ **2 FLOORS**



32 Putney High St, London SW15 1SQ



SHOREDITCH



OPENING TIMES

Monday 4pm-1am
 Tuesday 4pm-1am
 Wednesday 4pm-1am
 Thursday..... 4pm-1am
 Friday 4pm-2am
 Saturday 12pm-2am
 Sunday 4pm-12am

Simmons Shoreditch, our newest venue, blends a twisted circus theme with '90s nostalgia. The upstairs features old-school arcade games and vintage oddities, while the basement offers a kitchen disco with and impressive club lighting rig.

FULL VENUE CAPACITY

400

FUNCTION ROOM CAPACITY

200

BRING YOUR OWN DJ

YES

★ **KITCHEN DJ BOOTH** ★ **ARCADE GAMES**

SHOREDITCH

104-108 Curtain Rd, London EC2A 3AH

SOHO



OPENING TIMES

Monday 3pm-11:30pm
 Tuesday 3pm-11:30pm
 Wednesday 3pm-11:30pm
 Thursday..... 3pm-11:30pm
 Friday 3pm-12am
 Saturday 12pm-12am
 Sunday 12pm-10:30pm

Simmons Soho, located in the heart of Central London, spans two floors and features a 70s-inspired karaoke room. With its retro vibe, mirror ball skull, SEGA Megadrive, and plenty of room to host any gathering, it's a perfect fit for events of any size.

FULL VENUE CAPACITY

120

FUNCTION ROOM CAPACITY

60

BRING YOUR OWN DJ

YES

★ **70S KARAOKE ROOM** ★ **PHOTOBOOTH**



2 Bateman Street, London, W1D 4AE

TEMPLE



OPENING TIMES

Monday4pm-11pm
 Tuesday4pm-11pm
 Wednesday4pm-11pm
 Thursday..... 4pm-1am
 Friday 4pm-1am
 Saturday 4pm-1am
 Sunday4pm-11pm

Simmons Temple spans two floors and features two distinct bars, the downstairs area is lined with cozy booth seating and nostalgic neons, while upstairs offers a lively space for karaoke and dancing. A well-rounded setting perfect for any celebration.

FULL VENUE CAPACITY

150

FUNCTION ROOM CAPACITY

80

BRING YOUR OWN DJ

YES

★ **KARAOKE** ★ **2 FLOORS WITH BARS**



1 Milford Lane, London, WC2R 3LL

TOTTENHAM COURT RD



OPENING TIMES

Monday 3pm-3am
 Tuesday 3pm-3am
 Wednesday 3pm-3am
 Thursday 3pm-3am
 Friday 3pm-3am
 Saturday 3pm-3am
 Sunday 3pm-10:30pm

Simmons Tottenham Court Road is the perfect spot for smaller parties, right in the heart of Soho. With standout features like a Zoltar-inspired DJ booth and an iconic mirror ball centerpiece, it offers a unique vibe, plus unbeatable transport links for easy access.

FULL VENUE CAPACITY

90

SEMI PRIVATE CAPACITY

35

BRING YOUR OWN DJ

YES

★ **OUTSIDE AREA** ★ **ZOLTAR DJ BOOTH**



17 Manette St, London W1D 4AS



LONDON'S BEST HAPPY HOUR

2-FOR-1 COCKTAILS
SINGLE SPIRIT & MIXER £2.50
BOTTLES OF BEER £3.00
GLASSES OF WINE £3.00
BOTTLES OF WINE £12.00
COCKTAIL TEAPOTS £15.00
SHOT BATS £20.00
BOTTLES OF PROSECCO £20.00

EVERY SATURDAY
2 FOR 1 COCKTAILS
COCKTAIL TEAPOTS £15.00

WWW.SIMMONSBAR.CO.UK